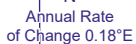
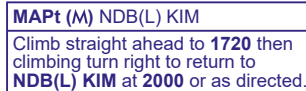


(ACFT CAT A,B,C,D)

Arrival not below MSA

DME I-HS zero ranged to THR RWY 02

As for procedure with DME except substitute timings for outbound legs 2.2MIN (CAT A,B); 1.7MIN (CAT C,D) prior to base turn. When established descend to MDH.

DIRECT ARRIVAL FROM SOUTH
Arrival **not below MSA** to intercept and establish on OTR VOR R201 (QDM 021°). After passing I-HS DME 15 descent **not below 2000**. See plan for continuation.

DIRECT ARRIVAL FROM SOUTHWEST
Arrival **not below MSA** to intercept and establish on OTR VOR R236 (QDM 056°). After passing I-HS DME 15 descent **not below 2000**. See plan for continuation.

NOTE Lowest altitude to commence procedure from hold is **2000**.

CHANGE (13/25): MAG VAR UPDATED. PAGE RENUMBERED.